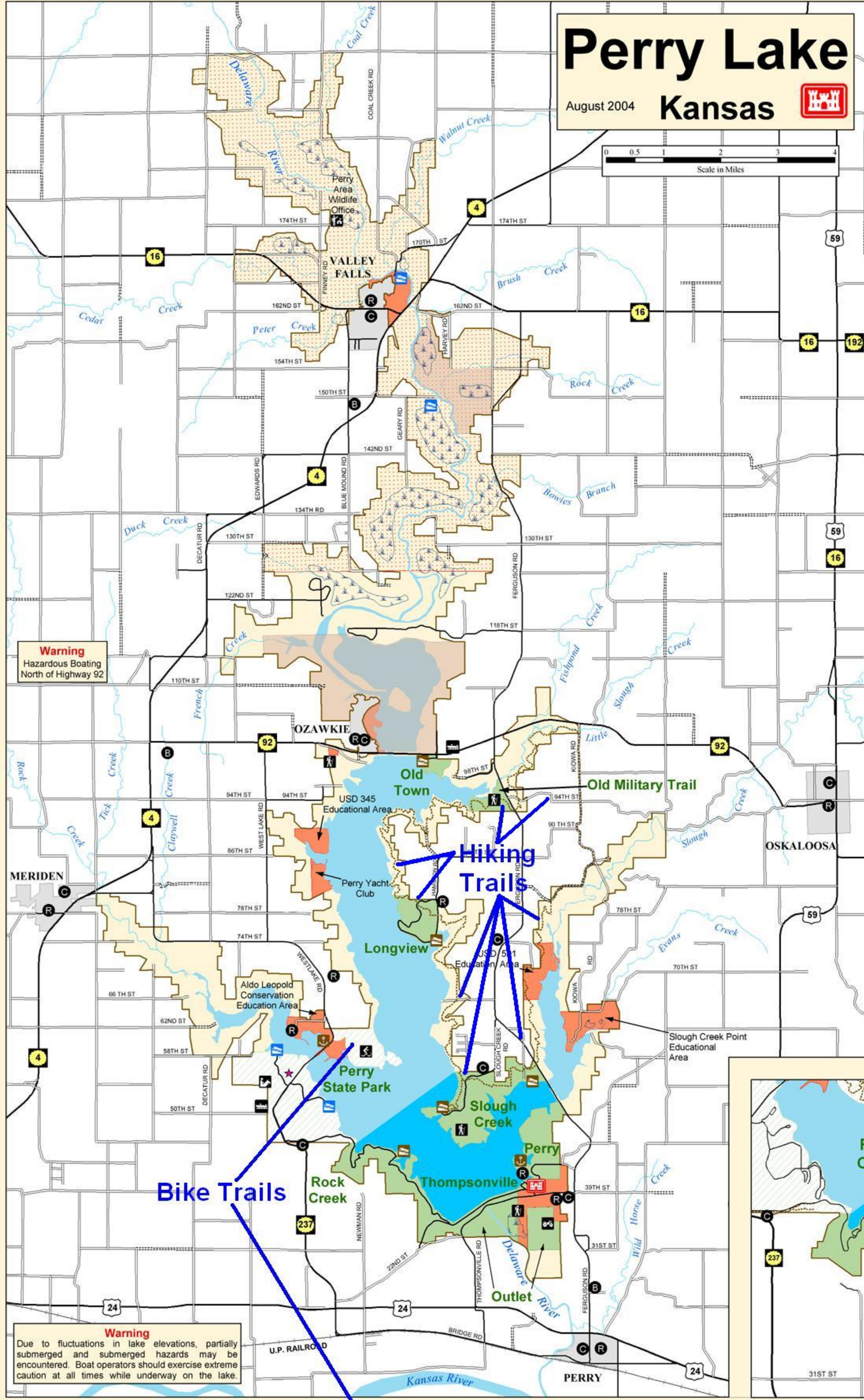
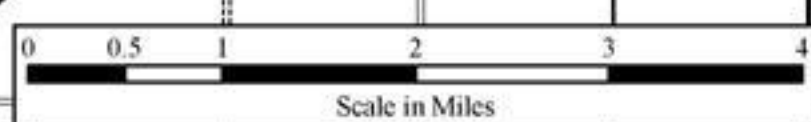


Perry Lake

August 2004 Kansas



PARKS	FACILITIES																
	Boat Ramp	Picnic Area	Toilets	Water Supply	Showers	Camping	Swimming Beach	Electric Hookups	Group Picnic Shelter	Sanitary Dump Station	Water Hookups	Group Camp Area	Nature Trail	Horse Trail	ATV Trail	Hiking Trail	Mountain Bike Trail
Perry State Park																	
Corps of Engineers Parks:																	
Outlet																	
Thompsonville																	
Rock Creek																	
Old Town																	
Old Military Trail																	
Longview																	
Slough Creek																	
Perry																	

Perry Lake

- Public Land - Hunting Allowed (Restrictions apply in some areas)
- Public Land Boundary
- No Hunting Area
- Corps Park (No Hunting)
- State Park (No Hunting)
- Kansas Dept. of Wildlife & Parks
- Wildlife Refuge Area (No Access 10/1 - 1/15)
- Wetlands
- Corps of Engineers Office
- State Park Office
- Perry Wildlife Office
- State Park Boat Ramp
- Corps Boat Ramp
- Hiking Trail
- Bike Trail
- Equestrian Trail
- ATV & Motorcycle Trail
- Paved Road
- Gravel Road
- Dirt Road
- Trail

Amenities

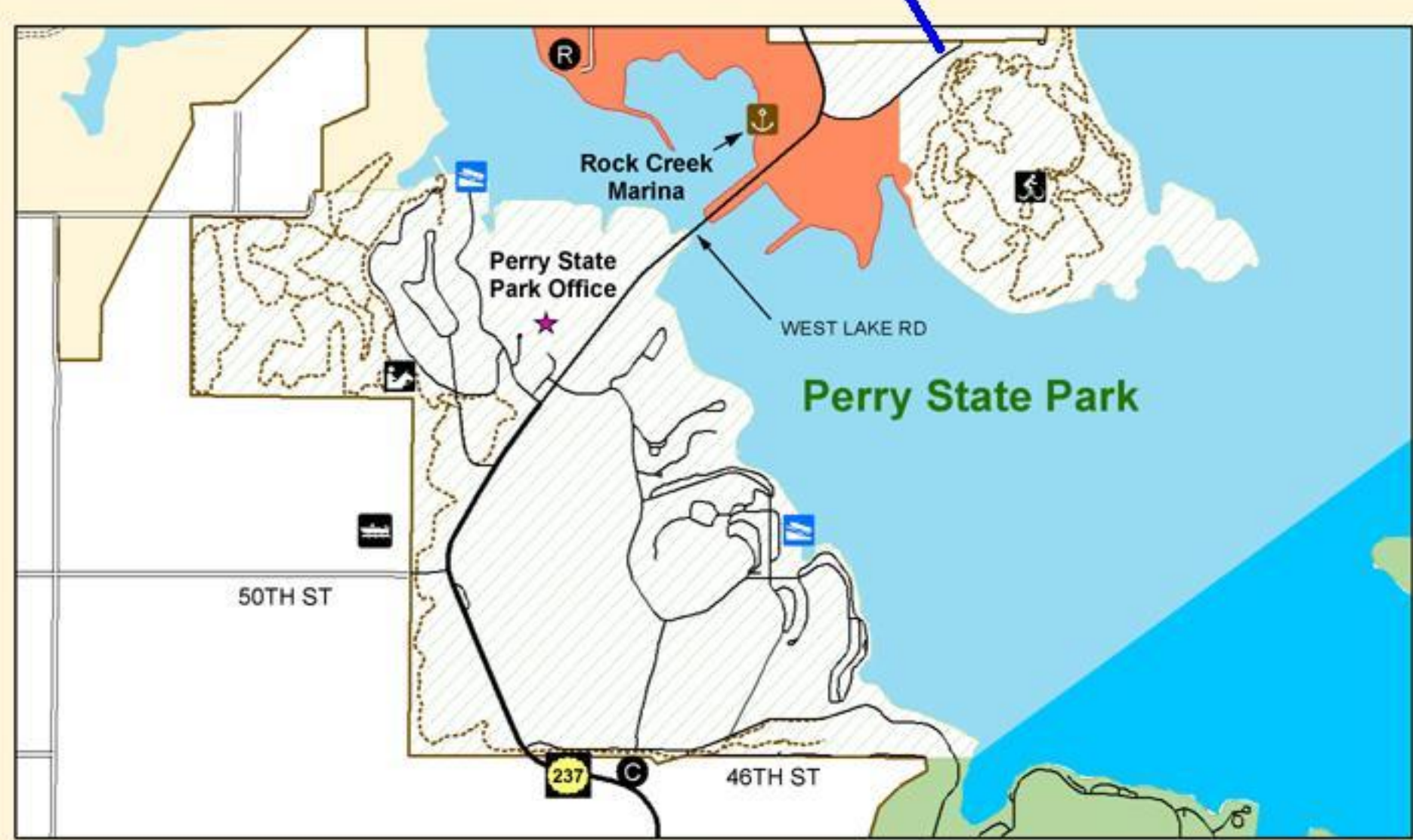
- Marina
- Boat Shop
- Bed & Breakfast
- Convenience Store / Gas
- Restaurant

LAKE NAVIGATION AID and MARKER SYSTEM

DO NOT PASS BETWEEN BUOY & SHORE
SAFE WATER ALL AROUND
ANCHOR BUOY
DIVER IN WATER

KNOW AND HEED BUOYS AND MARKERS FOR YOUR SAFETY
United States Aids to Navigation System (USATONS)

I look best in my life vest



Emergency Numbers

Emergencies	911
Corps of Engineers	785-597-5144
Perry State Park Office	785-248-3449
Jefferson County Sheriff	785-863-2351

Project Data

Dam	
Type	Rollled earth fill
Length, ft. (overall)	7,750
Lake	
Elevation, feet above mean sea level:	
Multipurpose pool	891.5
Flood control pool	920.6
Surface area, acres:	
Multipurpose pool	11,150
Full pool	25,300

